

The Acadia

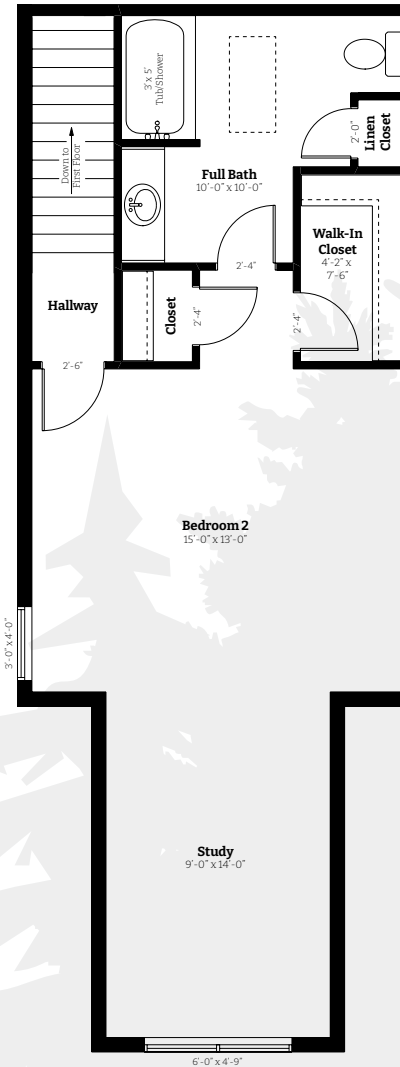
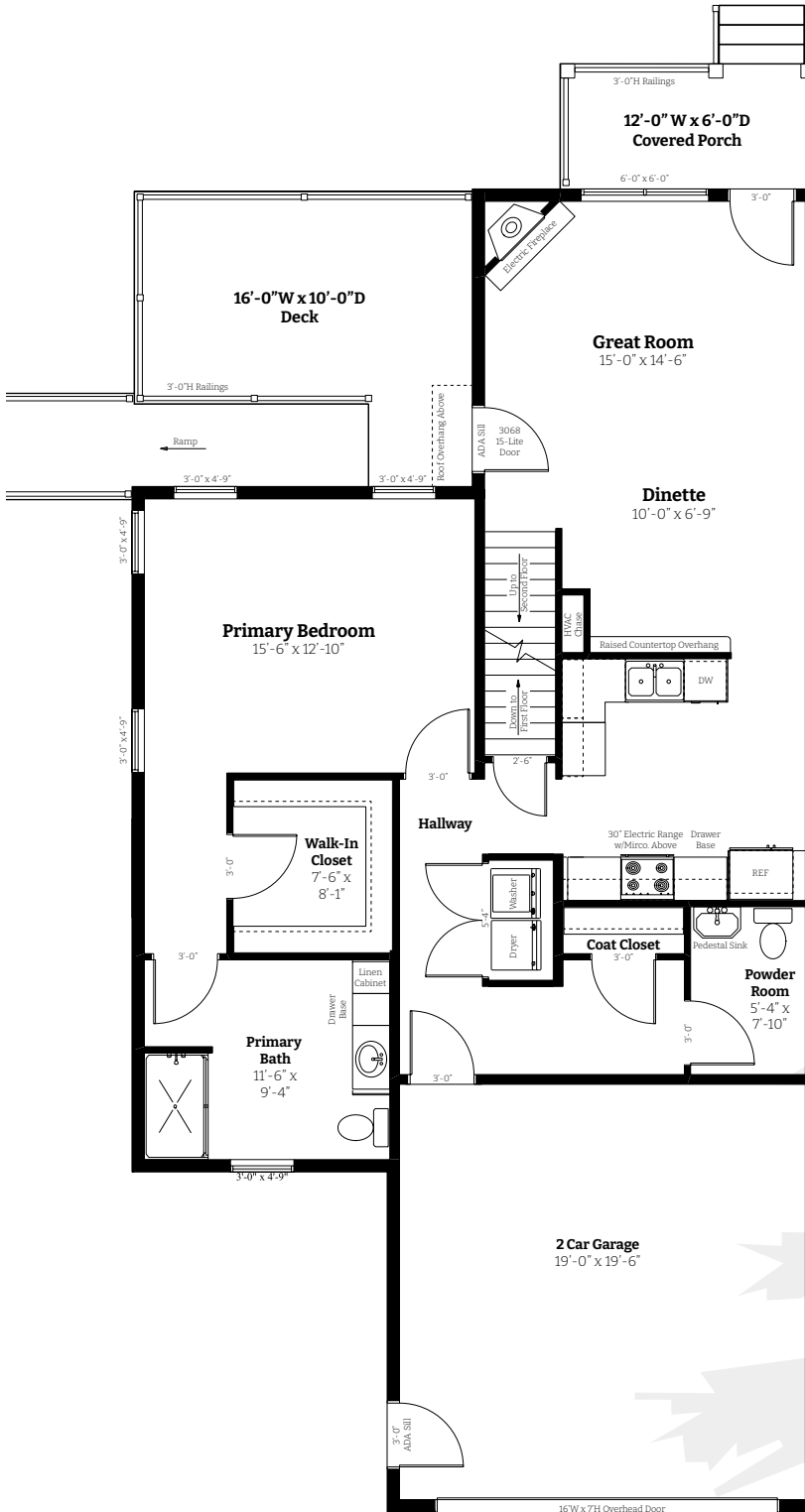


Finished Square Footage: 1,729
Starting Rent: TBD per month

The Acadia presents a refined and spacious end-unit design that blends thoughtful layout with elevated everyday living. This home features two large bedroom suites, including a desirable first-floor primary bedroom, with both suites offering walk-in closets for generous storage and privacy. A covered porch paired with a large open deck creates exceptional outdoor living space, ideal for entertaining or quiet relaxation. An attached two-car garage adds convenience, while the expansive 1,177 square-foot basement provides outstanding flexibility for storage, recreation or working from home. Distinctive and well-appointed, The Acadia delivers a sophisticated home experience with room to grow.

Features at a Glance:

- Two large suites including first floor primary bedroom
- 2 1/2 bathrooms
- Both generous bedroom suites feature walk-in closets
- Covered porch and a large open deck space
- End unit
- Attached two car garage
- 1,177 square foot basement



FieldstoneRidge.com

10 Fieldstone Commons
 Tolland, CT

