

# The Balsam

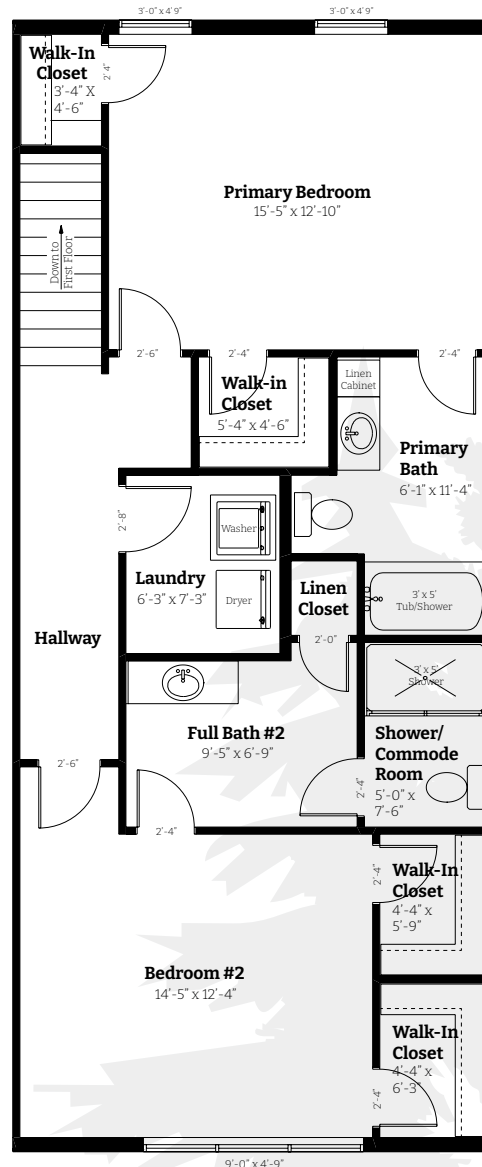
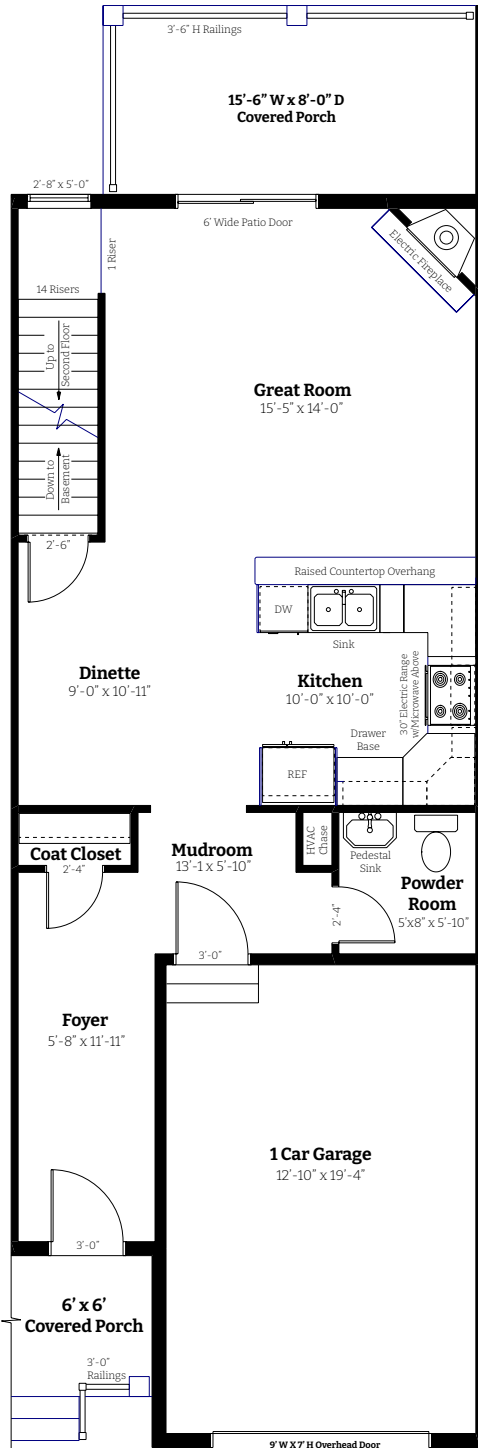


**Finished Square Footage: 1,580**  
**Starting Rent: \$3,395 per month**

The Balsam combines refined comfort with thoughtful design to create an inviting, upscale living experience. This two-bedroom, two-and-a-half-bath townhome features spacious bedrooms—each with its own ensuite bath and walk-in closet—offering privacy and luxury in equal measure. The open-concept main level extends to a large, elevated private porch, perfect for relaxing or entertaining. A dedicated laundry room and attached one-car garage add everyday convenience, while the expansive 707-square-foot unfinished walkout basement provides endless possibilities for storage, recreation or home office. Elegant, functional, and beautifully crafted, The Balsam is the perfect blend of sophistication and flexibility.

## Features at a Glance:

- 2 Bedrooms
- 2 ½ bathrooms
- Attached 1 car garage
- Both large bedrooms have ensuite bathrooms
- Walk in closets
- Large elevated private porch
- Spacious 707 square foot unfinished walkout basement
- Dedicated laundry room



**FieldstoneRidge.com**  
 10 Fieldstone Commons  
 Tolland, CT

