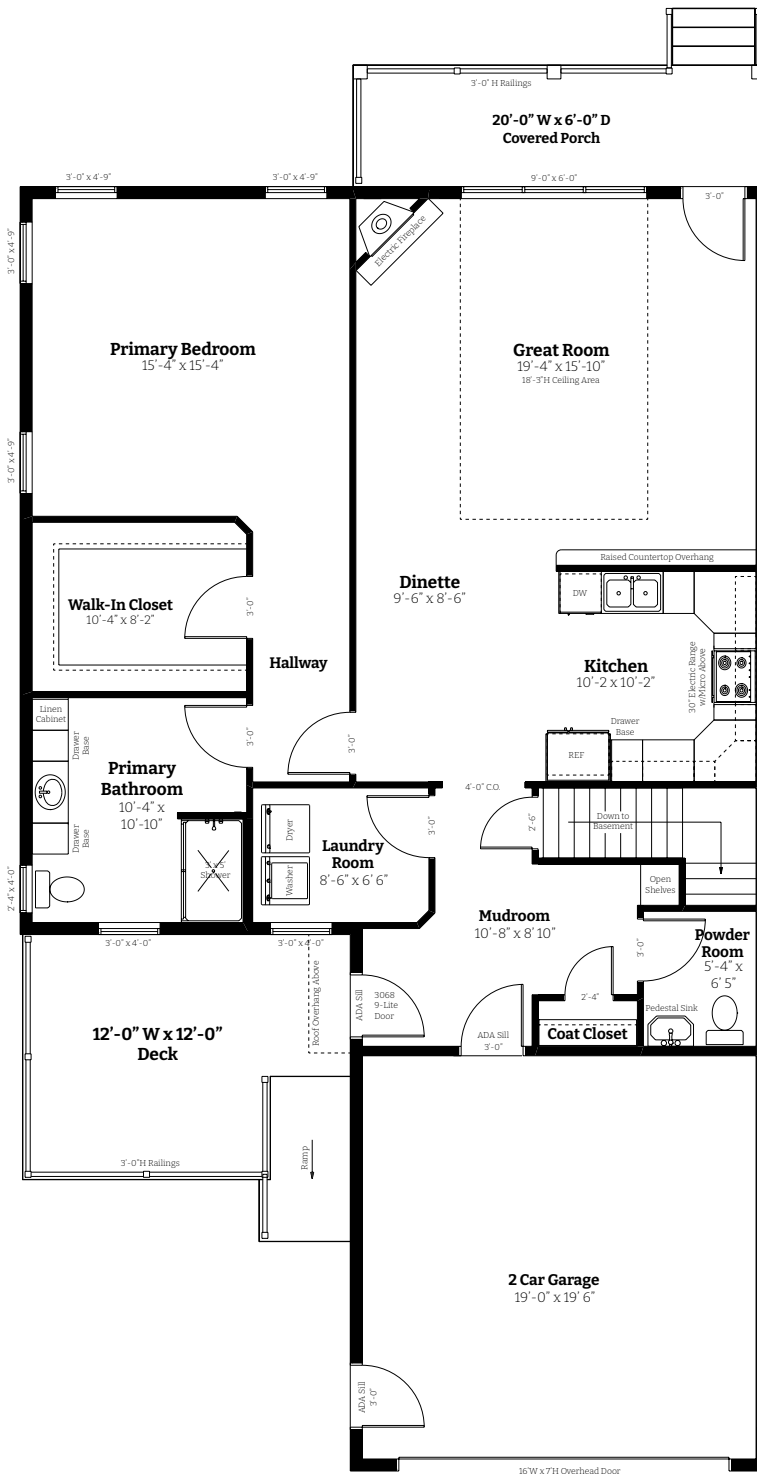


# The Sycamore



**Finished Square Footage: 1,409**  
**Starting Rent: TBD per month**

The Sycamore delivers refined, single-level living with a thoughtfully designed layout and the added appeal of an end-unit setting. This one-bedroom, one-and-a-half-bath residence features a spacious primary bedroom suite and a dramatic great room highlighted by soaring ceilings that enhance light and openness. Two separate porch areas provide flexible outdoor living options, ideal for both entertaining and quiet moments of retreat. An attached two-car garage, dedicated laundry room, and an expansive 1,409-square-foot basement offer exceptional convenience and versatility. Elegant in design and generous in scale, The Sycamore is a sophisticated home crafted for effortless living.



## Features at a Glance:

- 1 bedroom
- 1 1/2 bathrooms
- One level unit with spacious primary bedroom suite
- Attached 2 car garage
- Spacious great room with high ceiling
- Dedicated laundry room
- 2 separate porch areas
- Expansive 1,409 square foot basement
- End unit
- Abundant natural light throughout home

[FieldstoneRidge.com](http://FieldstoneRidge.com)

10 Fieldstone Commons  
 Tolland, CT

