

# The Walden

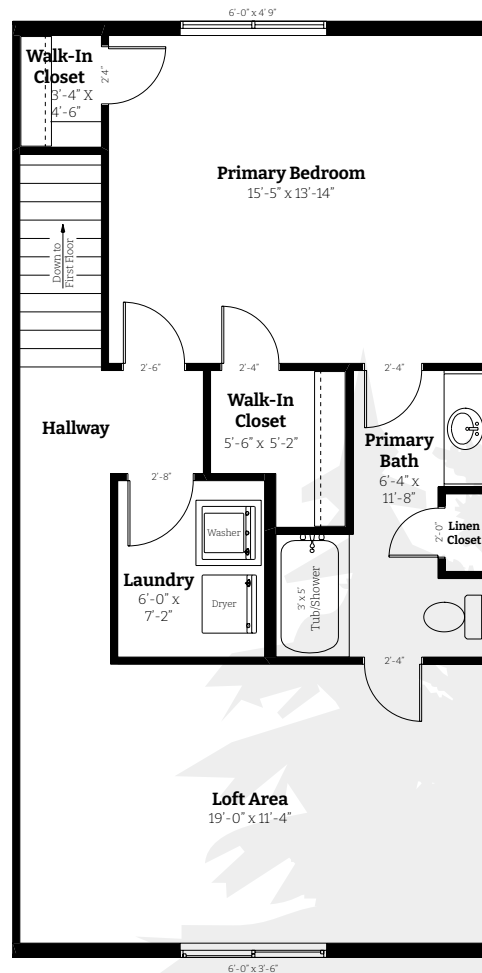
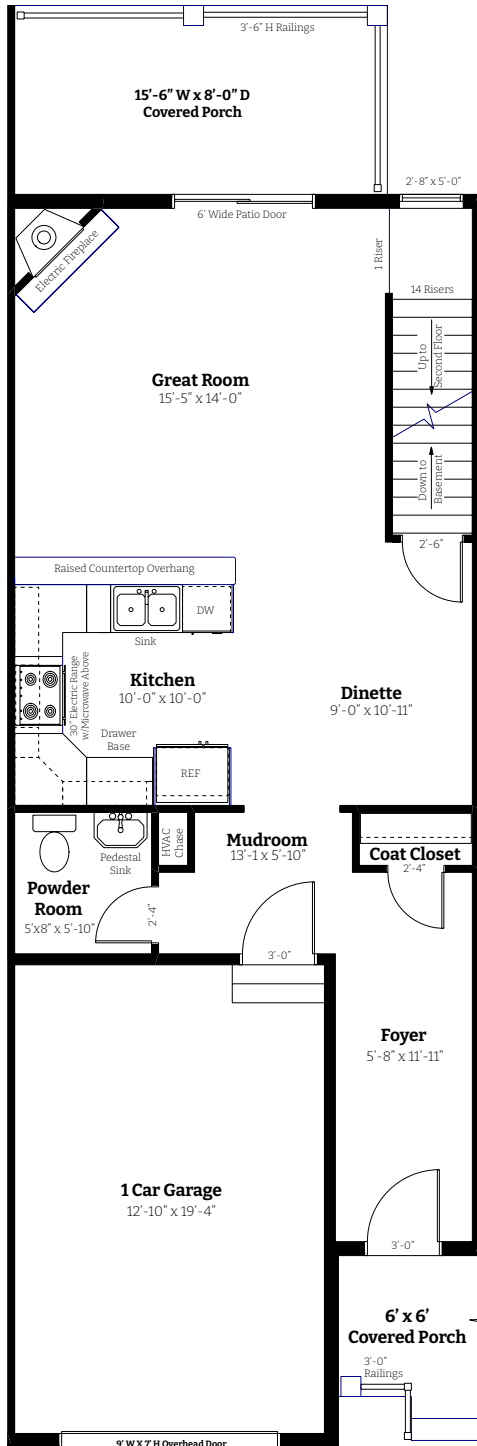


**Finished Square Footage: 1,423**

The Walden offers an elegant balance of style and sophistication, designed for those who appreciate refined living in a more intimate setting. This one-bedroom, one-and-a-half-bath townhome features a spacious primary suite with an ensuite bathroom and walk-in closet, complemented by a bright and versatile office area ideal for remote work or quiet retreat. The open-concept living space flows seamlessly to a large, elevated private porch—perfect for morning coffee or evening relaxation. With a dedicated laundry room, attached one-car garage, and a generous 707-square-foot unfinished walkout basement ready for customization, The Walden delivers elevated style and everyday practicality in perfect harmony.

### Features at a Glance:

- 1 bedroom
- 1 1/2 bathrooms
- Attached 1 car garage
- Large primary bedroom with ensuite bathroom
- Spacious office area
- Large elevated private porch
- Generous 707 square foot unfinished walkout basement
- Dedicated laundry room



**FieldstoneRidge.com**  
 10 Fieldstone Commons  
 Tolland, CT

